

# DIODE LASER HAIR REMOVAL

## 808NM DIODE LASER HAIR REMOVAL MACHINE

Latest 4 Wavelengths  
808/755/940/1064nm



- ✓ Fast and permanent hair removal.
- ✓ Suitable for all hair types and skin types, and pain less.
- ✓ Skin rejuvenation





# Why Advantages choose us?

1. USA Coherent brand laser emitter, stable light.
2. Safety treatment. Stable performance. Long usage life.
3. High efficiency. Absorption of melanin to achieve the effect of painless hair removal effectively.
4. Pain free. Sapphire touch cooling system can make sure that treatment more safe and no hurt to skin. Water+ air+ semiconductor cooling system, Italy water pump, water flow.
5. New add cooling refrigerator inside machine, to assure machine keep working long time with good cooling.
6. High quality, sophisticated internals, top quality laser.
7. Fast hair removal result. The big spot size prompt the treatment speed.
8. Permanent hair removal. Applicable to all skin color, excellent result.





# MACHINE DISPLAY

- ▶ **15.6 inch color touch LCD screen.**
- ▶ **The screen can be freely adjusted 90° degrees**
- ▶ **Language can be customized**
- ▶ **LOGO can be customized**



Different languages can built in the system

Warranty period: 2 years





# HANDPIECE DETAILS

## Integrated visual screen

Screen linkage, real-time monitoring  
Easy and efficient operation



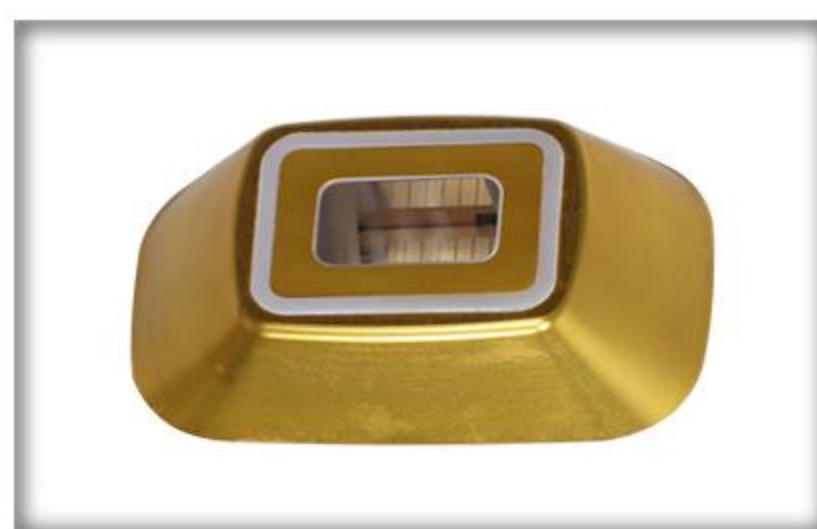
## Upgrade the controller

The new version of the handle with LCD is very convenient and intelligent technology

### TWO SPOT SIZES HANDLE PIECE:



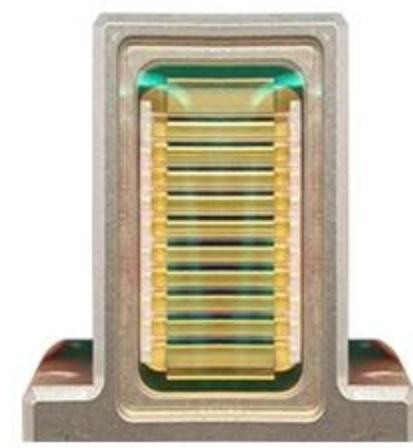
12\*20mm



12\*30mm

A variety of different powers and different spot sizes are available to meet the treatment needs of different parts of the customer.





Laser



Frozen slices



crystal

**Trapezoidal light outlet with strong energy concentration effect  
Easy to treat areas that are usually difficult to reach**







-12.4°C

## COOLING

water + air + semiconductor

## Handpiece Cooling System

Sapphire TEC cooling+water cooling  
+Real-time monitoring

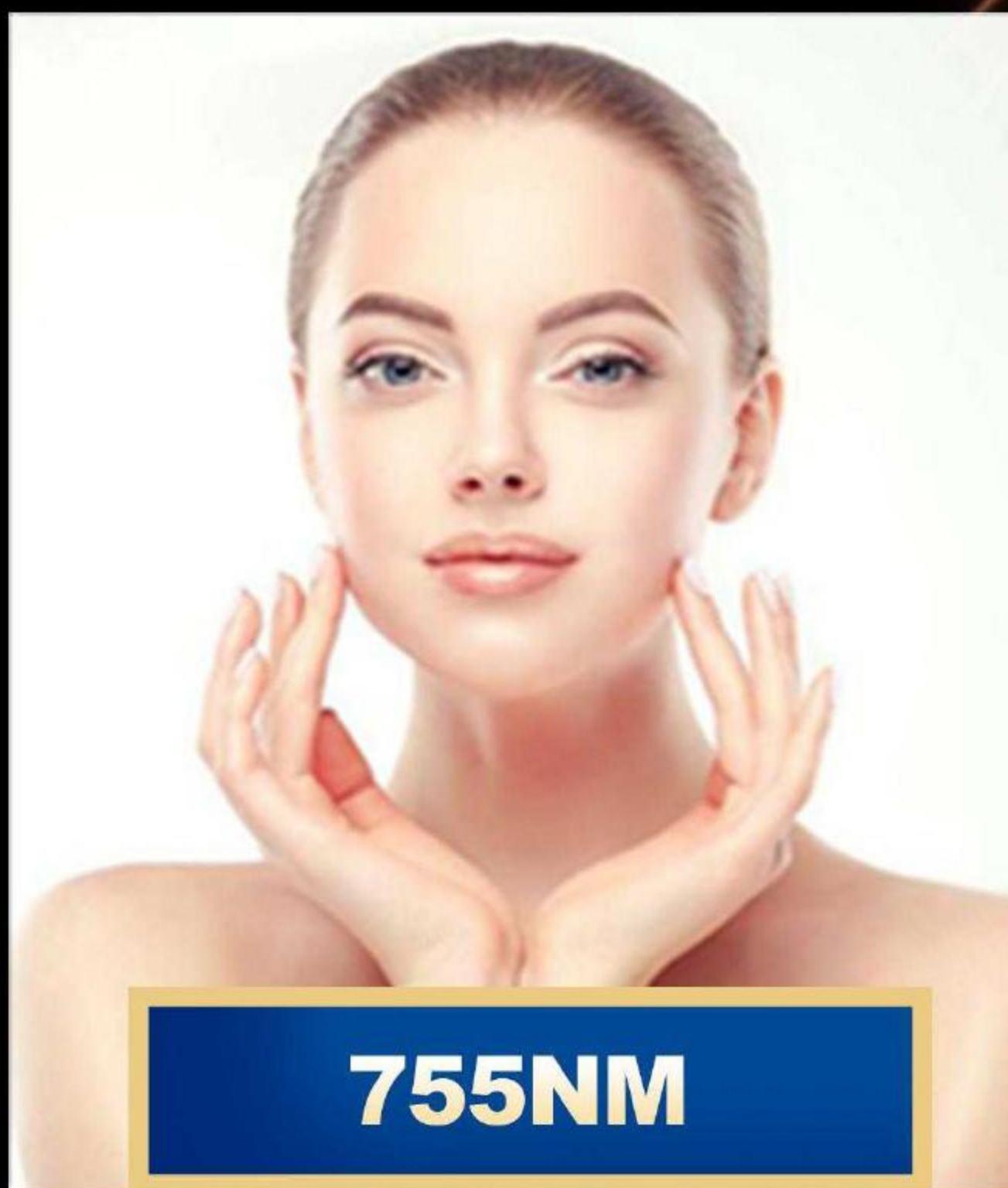


Suitable for all hair types and skin types, and pain less.

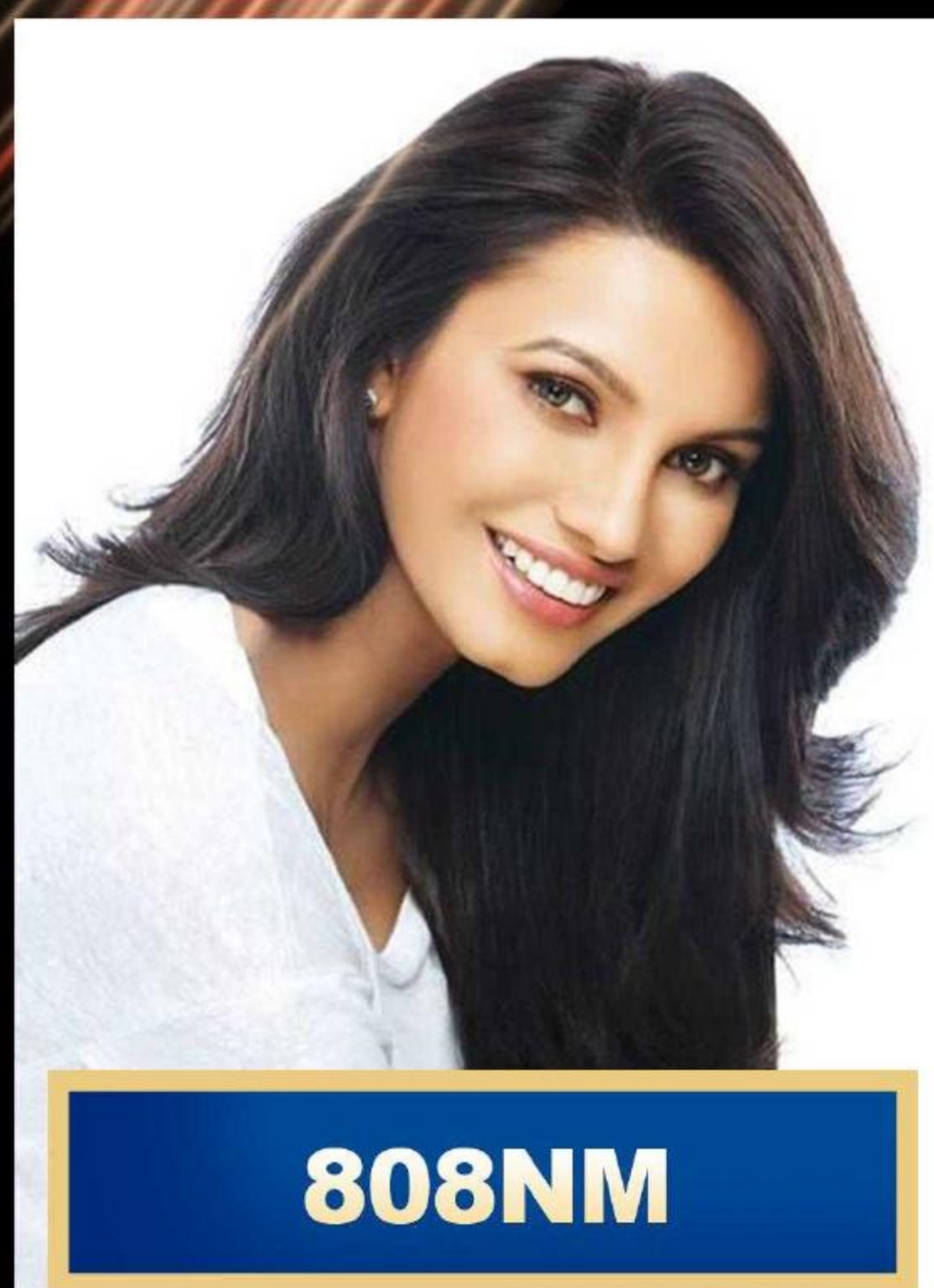
## **4 WAVELENGTH**

**755NM+808NM+940nm+1064NM**

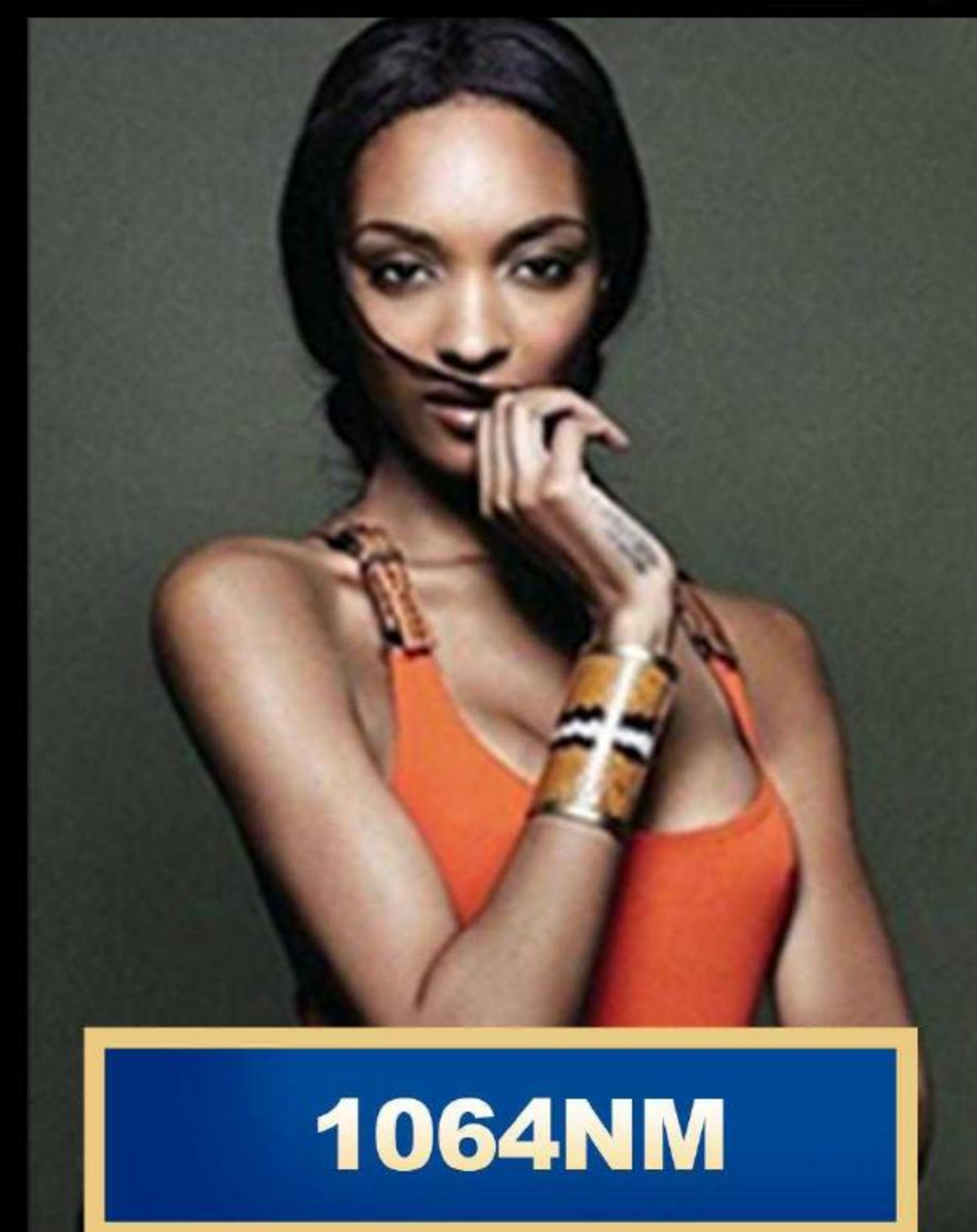
**Suitable for all hair colors and skin types**



**755NM**



**808NM**



**1064NM**

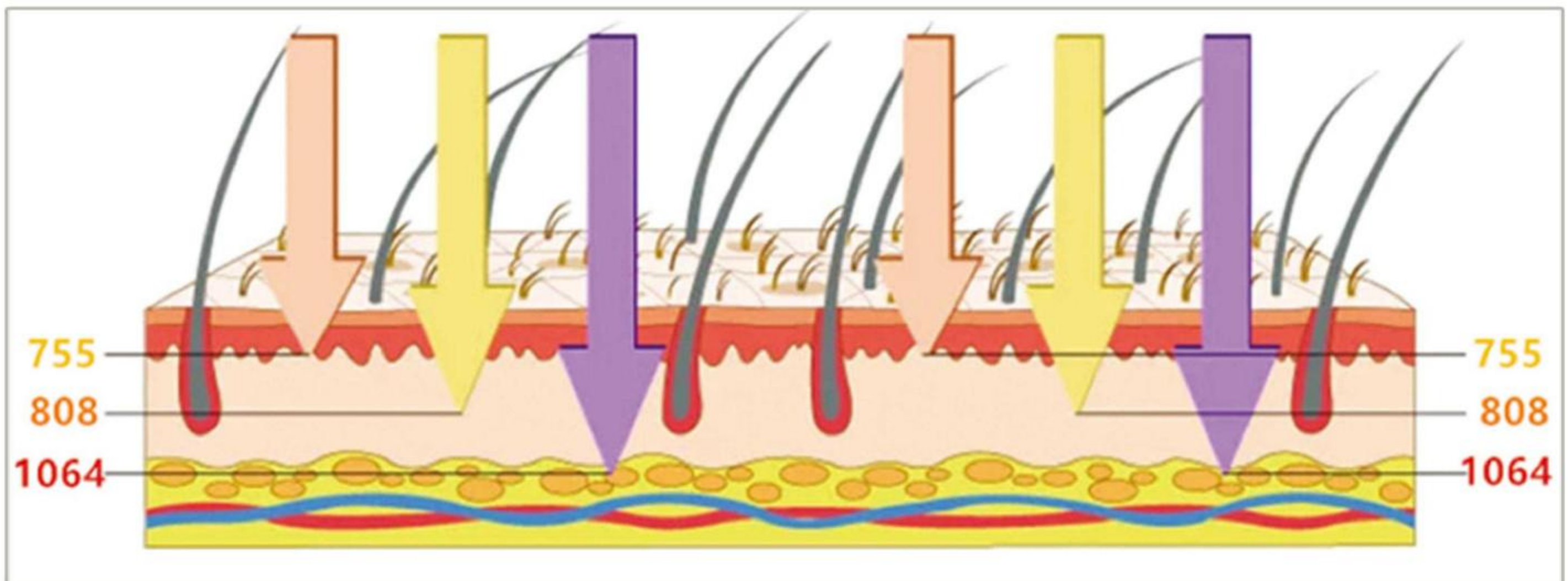
DIODE LASER ALEX 755NM

DIODE LASER GOLDEN 808NM

DIODE LASER YAG 1064NM



# Working Theory

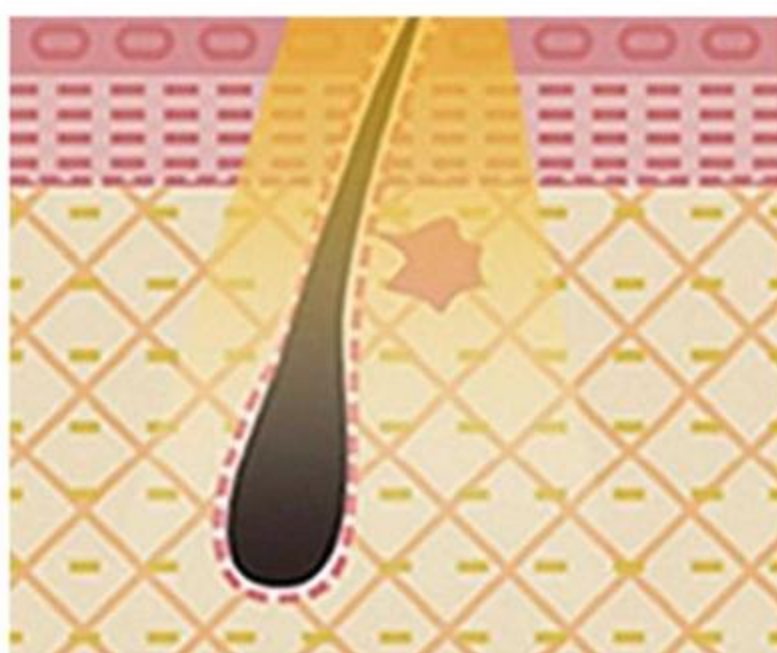


## DIODE LASER HAIR REMOVAL MACHINE WORKING THEORY:

Clinically proven to deliver safe and effective hair removal on all skin and hair types, is the fastest diode laser platform of Goldenlaser!

It is performed using gold standard diode laser technology, with energy penetrates deep into the dermis with high average power and a rapid 10 pulsepersecond repetition rate to heat the hair shaft and hair follicle, rather than destroy the oxygen organization around hair follicle.

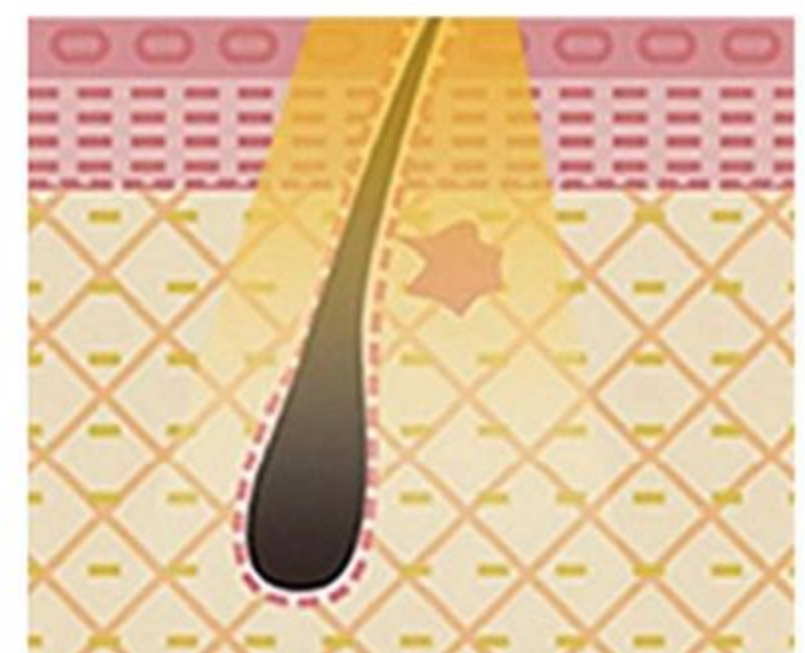
Meanwhile, contacting surface cooling technology applied on the Sapphire DualChill Tip can eliminate the heat effect attributed to optical energy, greatly improving both the treatment performance and safety.



Emit a laser beam



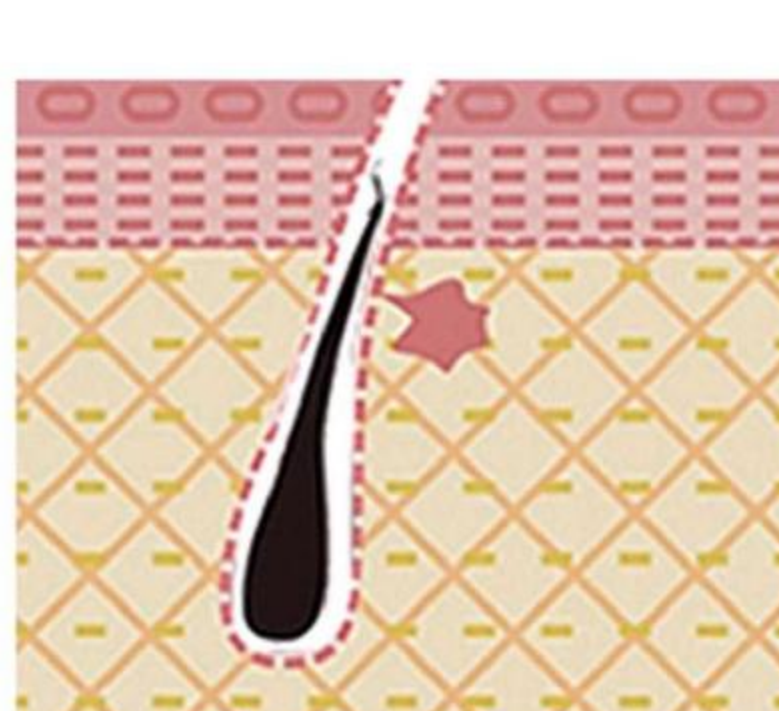
The laser beam is absorbed by hair follicle melanin



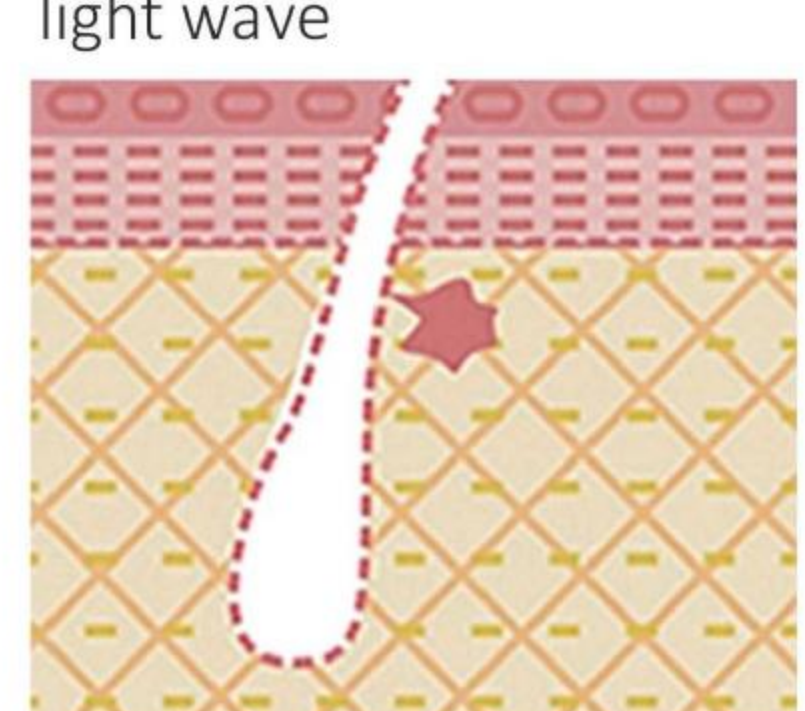
Different color hair has different ability to absorb light wave



After absorption, the laser energy will be converted into heat energy



Hair follicles and surrounding stem cells lose their activity and fall off



So reach hair removal effect



# TREATMENT AREA



# TREATMENT EFFECT





# TECHNICAL SPECIFICATION

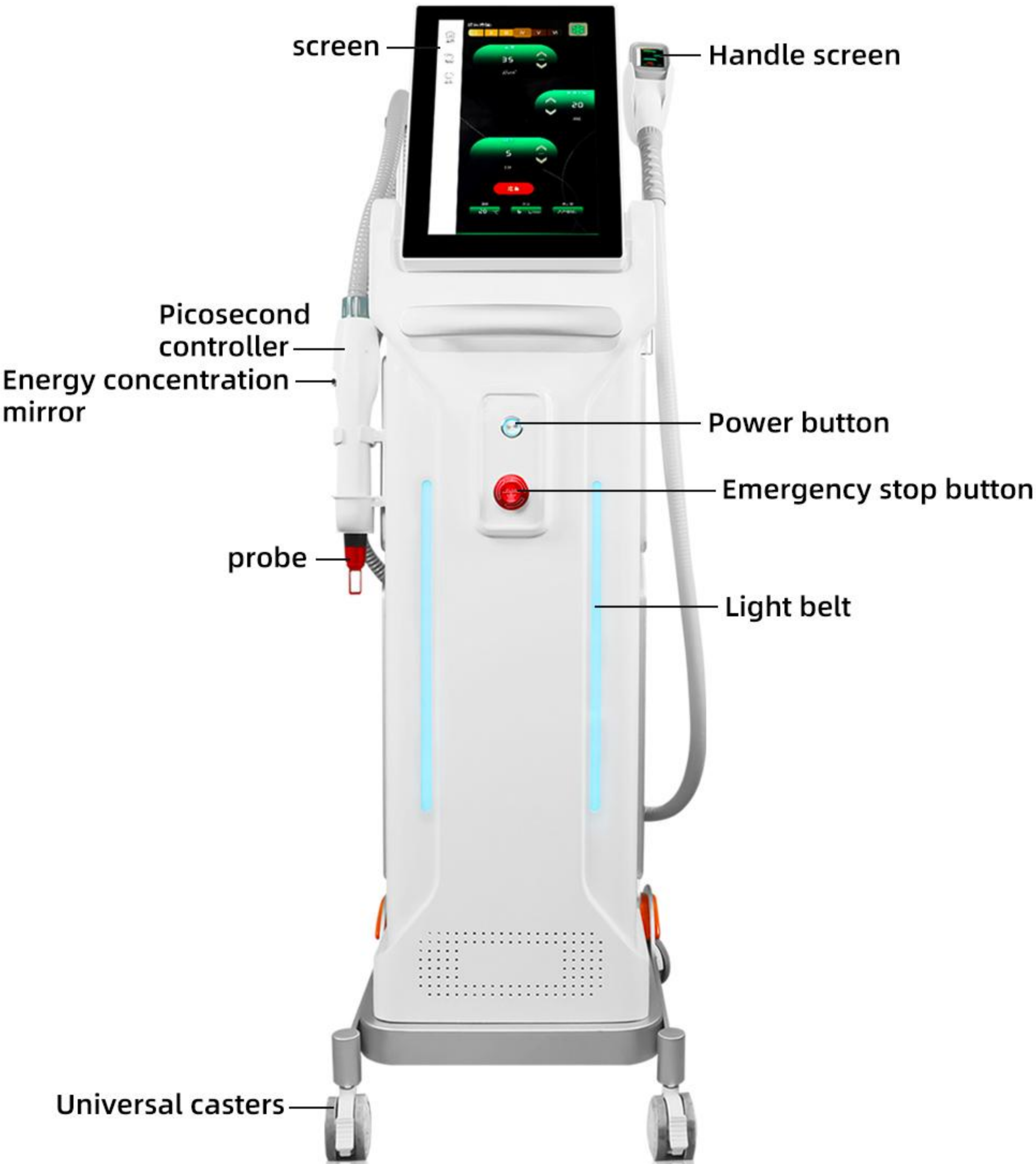
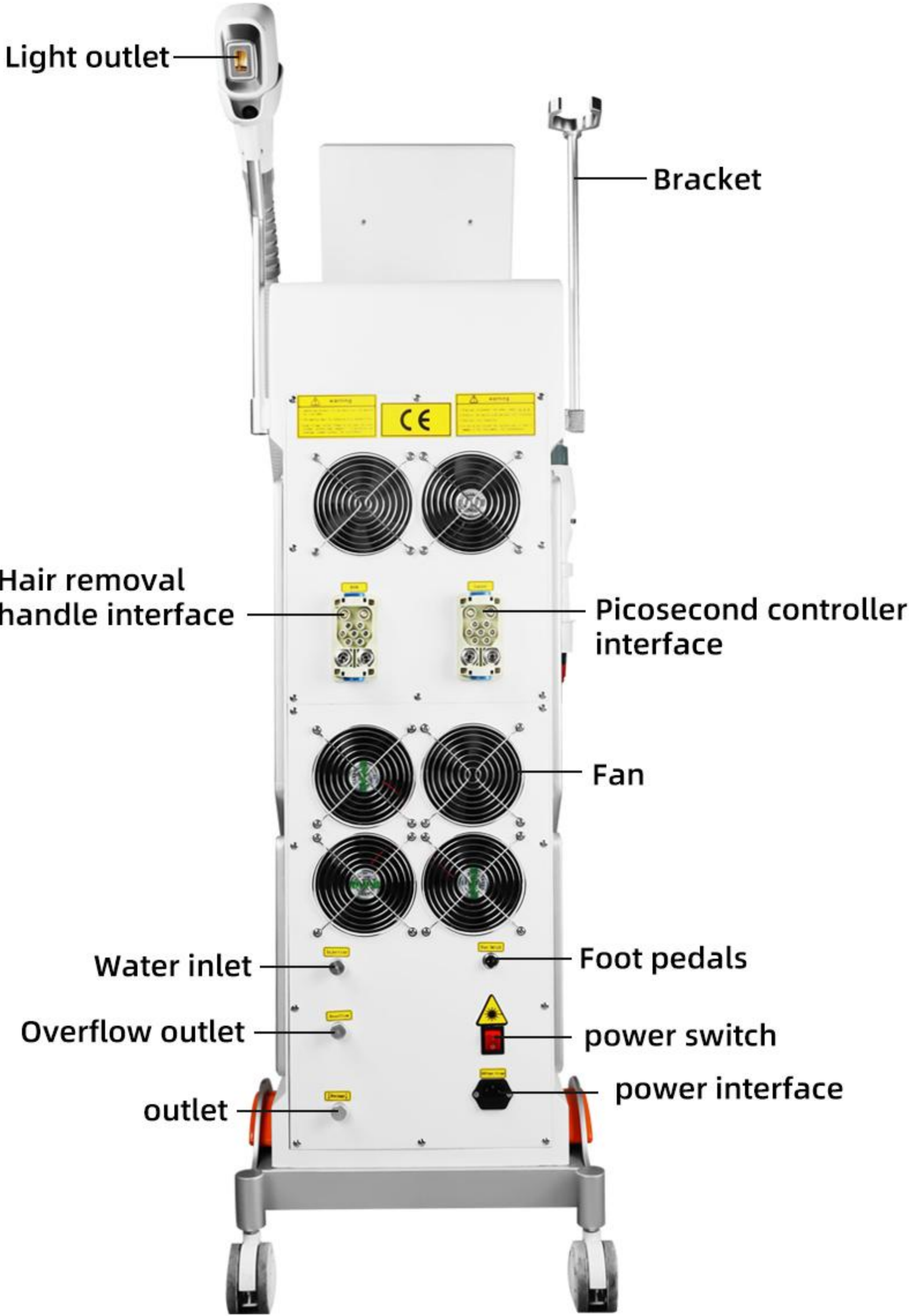
Laser Type	1000W/1200W/1600W Diode Laser
Language	Different languages can built in the system
Display	15.6 inch color tpuch LCD screen
Spot Size	12x20 mm2 12x30 mm2
Pulse width	10-400ms adjustable
Energy	10-100J/cm
Frequency	1-10Hz(continuous mode)
Cooling	water+ air+semiconductor
Temperature of Probe	-12.4-2°C
Handpiece Cooling System	Sapphire TEC cooling+water cooling+Real-time montoring
Water System Cooling	high power condenser module+Fan cooling+Real-time montoring
WaTerSystem Protection	water pump, water fow, water level, water temperature etc.
Continuous Operation time	24 hours
Peak power	2000W
Shots time	100 million shots
Voltage	AC220V+22V,50/60Hz,10A



# MACHINE INTRODUCTION

## Detail determines quality

[ Different machines have different internal configurations, the actual product shall prevail ]





# MACHINE ACCESSORIES



probe



Protective goggles



Foot pedals



power cord



patch



Inlet pipe



Hair removal handle



Picosecond controller